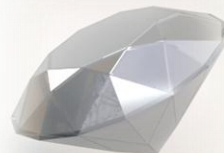
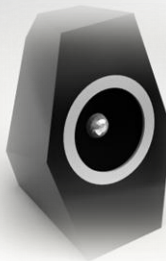


BLINK



spring/summer 2013

www.withablink.com



FOREWORD

The world is becoming perplexingly complicated, yet it remains simple. If we trace the fundamental drivers of human evolution, we will end up with science, art, human beings and the interactions of the three.

And such are our focuses. Here at , we strive to combine advanced technology and modernist design, with sheer dedication to user experience. In other words, our products are simple, intuitive, and make you .

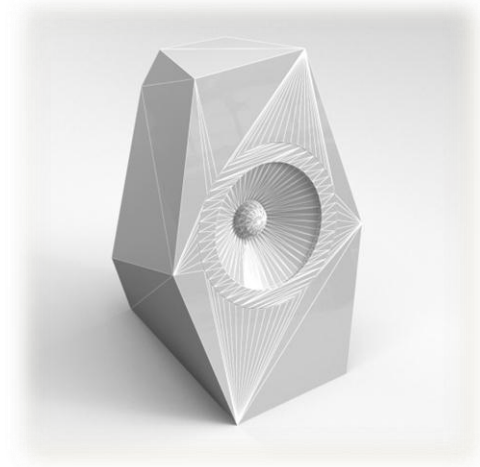
All of our products comes with its unique series number, and can be wireless connected to your smartphone. We are developing an integrated app platform to offer automatic feature updates, and to protect and upgrade your valuable purchases.

SPEAKER



S P E A K E R : D E S C R I P T I O N

Stylish, powerful, portable. A high-quality wireless speaker for your phone and mobile device, to share your thoughts and taste everywhere.



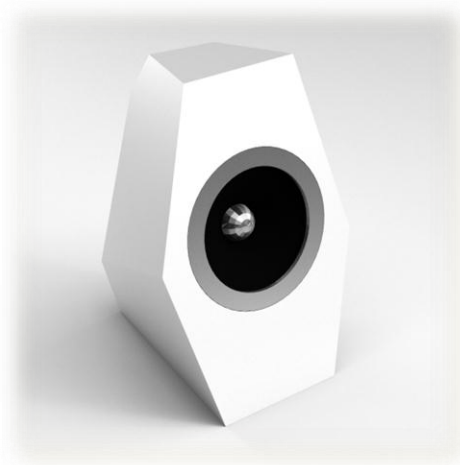
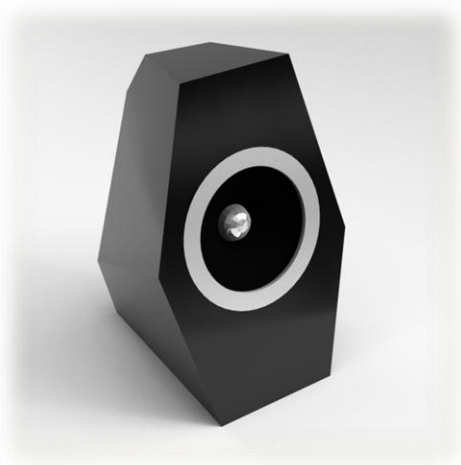
Specially engineered high-fidelity 2' driver unit.
Irregular shape to reduce standing waves.
Optimal sound quality with mighty volume.

Applicable for any phones, tablets, and digital players. Audio cable usable for older devices.

Dimensions: 9 x 7 x 13 cm approx.

Sample available around Chinese New Year.

SPEAKER : EDITIONS



Color & engraving customizable.

Enquiry: info@withablink.com

LOCATOR



LOCATOR : DESCRIPTION

A Bluetooth 4.0 device chained to your key or suitcase, for your smartphone to help you locate your possessions.



Shaped like a pendant, with compact chip and changeable battery inside. Key ring and key hook supplied.

Responds to the 'call' button in the supplied app on your smartphone, and also able to 'call' you when it is moving away.

Dimensions: 2 x 3 x 1 cm approx.

Available in March upon demand.

LOCATOR : EDITIONS



Limited special offering – Jaguar Edition.

Enquiry: info@withablink.com

LIGHT



LIGHT : DESCRIPTION

Beautiful, intelligent, connected light. Use your smartphone to set its color. Endless possibilities for delight.



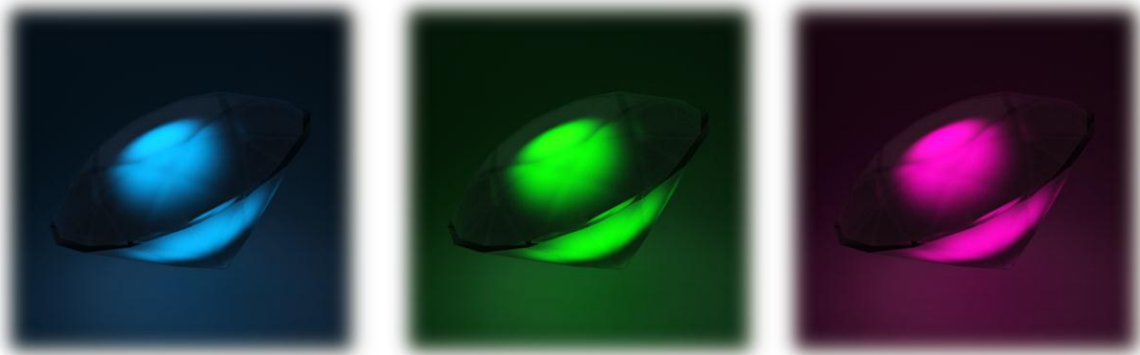
Diamond shaped and polished. Brilliantly radiating while in action.

Millions of color and lighting settings via supplied app on your smartphone using Bluetooth connection.

Dimensions: 10 x 10 x 6 cm approx.


Available in March upon demand.

LIGHT : COLORS




Millions of color and lighting settings via supplied app on your smartphone using Bluetooth connection.

AFTERWORD

 originates from the renowned book by Malcolm Gladwell, which argues spontaneous decisions are often better than carefully planned and considered ones, and explores factors that give rise to such intuitions.

With a blink, you perceive, judge and choose, prompted by intuitions. Behind such intuitions are years of hard works, deep thoughts and reflections - paving your way to where you are today.

Similarly, to make you blink, we devoted enormous efforts to perfect our products and services along the way. We crafted our designs from careful studies of tons of ideas and their respective philosophical and social backgrounds; we tailored and tested our technical functions thoroughly to make sure they are easy and enjoyable to use; and we spent endless hours pondering every details, down to an invisible bolt or the most appropriate seal on the package box. And we will be more than honored to listen to your needs and suggestions.

With a blink, you will find our  series well stating your style. It is a simple call.

FOLLOW US

Website: www.withablink.com

Email: info@withablink.com

Like Us: facebook.com/withablink

Follow Us: twitter.com/withablink

Weibo: weibo.com/withablink



Feel free to contact us. Thank you for your supports.

WITH A BLINK



www.withablink.com